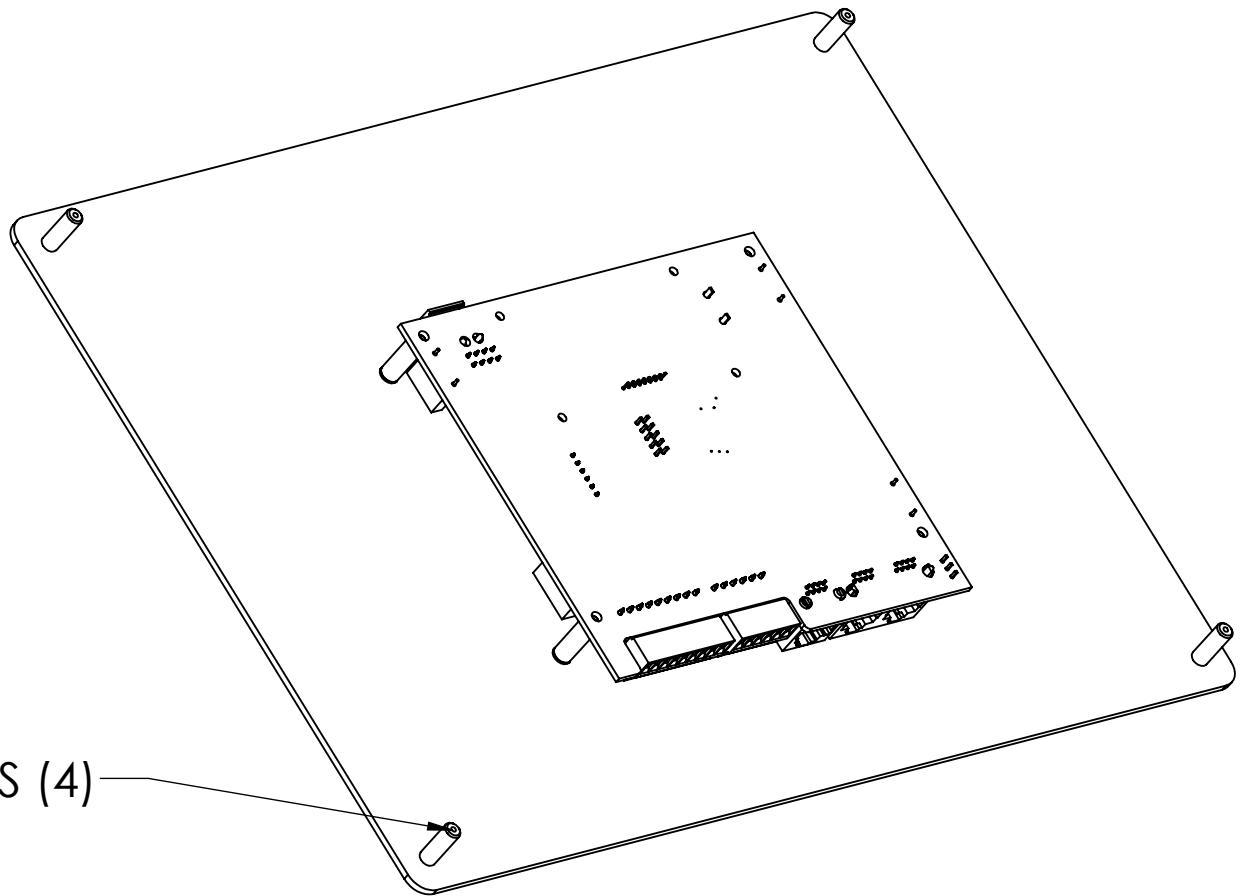
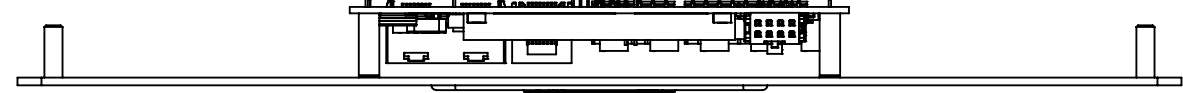
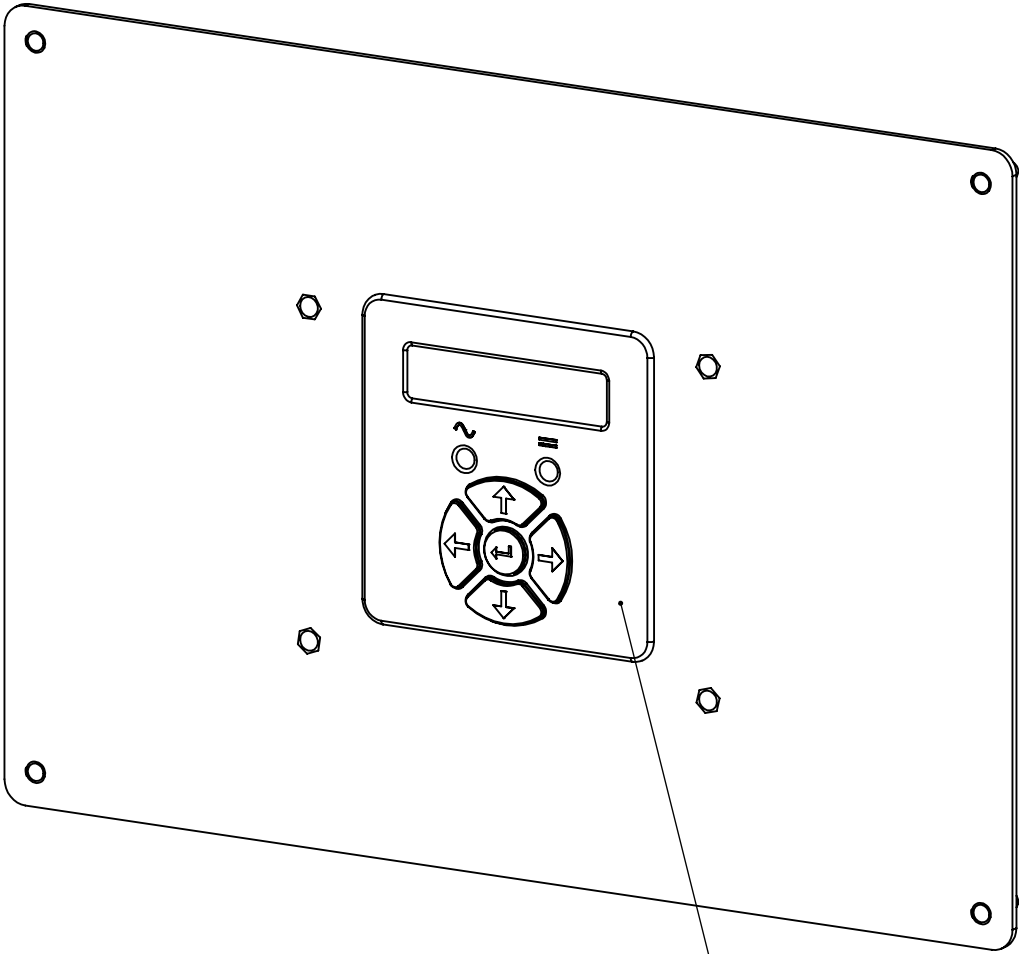


NOTES:  
1. THIS DRAWING IS FOR REFERENCE ONLY.  
2. PANEL COLOR: ANSI 61 GRAY  
3. WEIGHT: 2 LBS MAXIMUM

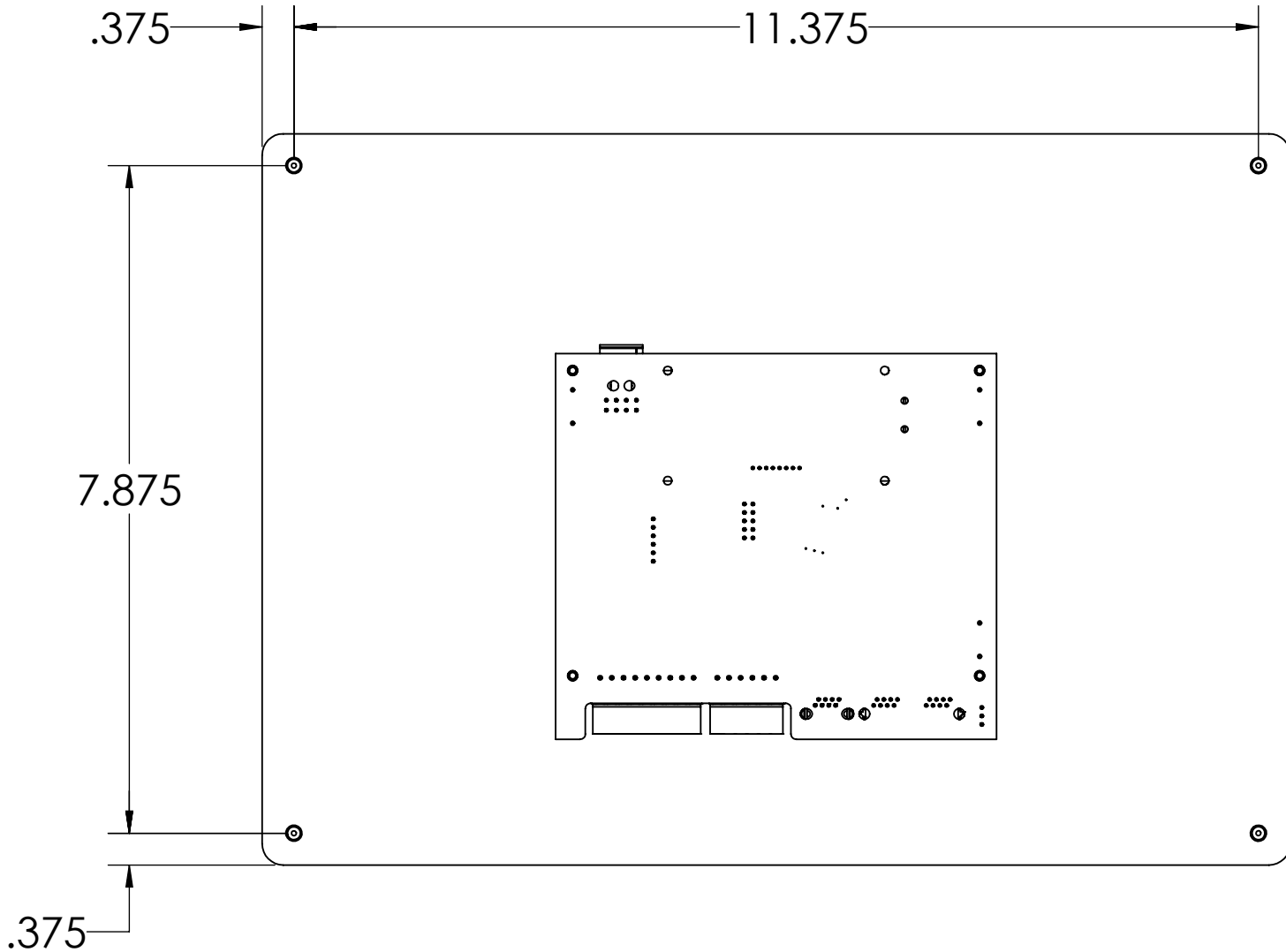
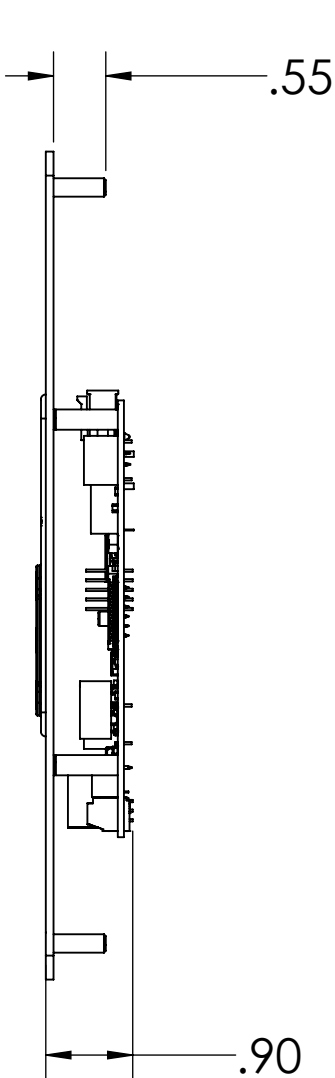
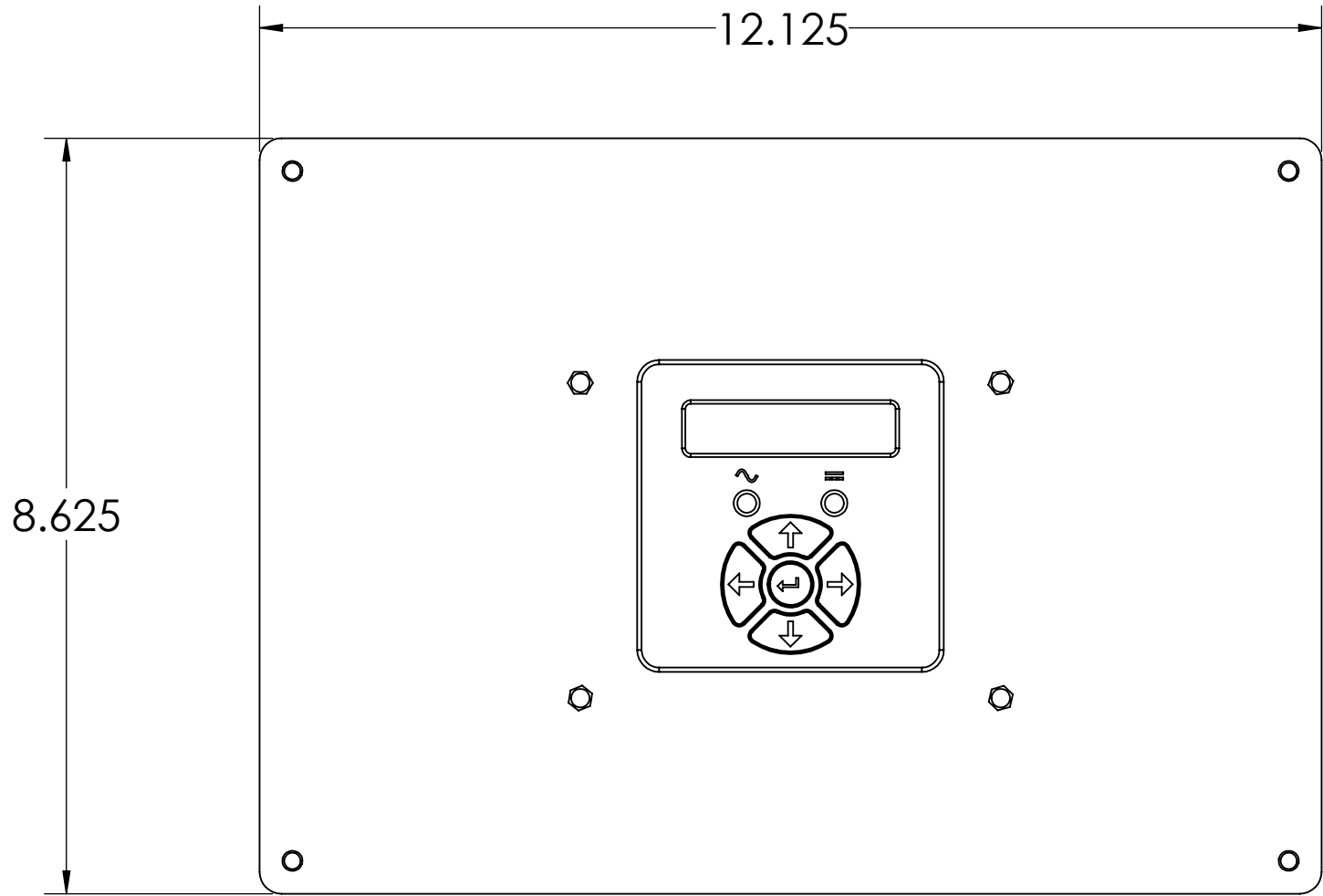
REVISIONS				
DCN	REV	DESCRIPTION	DATE	APPROVED
107872	A	INITIAL RELEASE	6/1/2020	ERS



10-32 MOUNTING STUDS (4)



KEYPAD CONTROL AND DISPLAY



1840 INDUSTRIAL CIRCLE  
LONGMONT, CO 80501  
903-678-7500  
WWW.SENS-USA.COM  
PROPRIETARY AND CONFIDENTIAL  
THE INFORMATION CONTAINED IN THIS DRAWING IS THE SOLE  
PROPERTY OF STORED ENERGY SYSTEMS, LLC. ANY  
REPRODUCTION IN PART OR AS A WHOLE WITHOUT THE WRITTEN  
PERMISSION OF STORED ENERGY SYSTEMS, LLC IS PROHIBITED.

UNLESS OTHERWISE SPECIFIED: DIMENSIONS ARE IN INCHES DEFAULT TOLERANCES: ANGLES $\pm 1^\circ$ TWO PLACE DECIMAL $\pm .02$ THREE PLACE DECIMAL $\pm .005$ DO NOT SCALE DRAWING			NAME ERS 6/1/2020	DATE	DESCRIPTION 2DCAD,EDC-KEYPAD DISPLAY,STANDARD
THIRD ANGLE PROJECTION DIMENSIONS & TOLERANCES PER ASME Y14.5 - 2007			CHECKED	SIZE D	DOCUMENT NUMBER 2DCAD-EDC-KEYPAD_DISP-STD
				REV A	SHEET 1 OF 1